

The death of a family member can be one of the most difficult experiences for a family. We hope the following information will help you through the next few hours and days.

Know that our thoughts will continue to be with you.



ORGAN AND TISSUE DONATION

If you were not already offered the opportunity for your family member to become an organ or tissue donor at the hospital, and he or she is eligible to donate, you may receive a call soon after you return home from a representative of LifeChoice Donor Services. The caller will be able to provide you with all of the information you need to help make this decision.

FUNERAL ARRANGEMENTS

Arrangements for your family member's funeral and/or religious services can be made after you leave the hospital and have had time to discuss plans with family members and friends. After you make the initial call, the funeral home will probably contact you to arrange a time for a meeting to help you with the details.

WHEN YOU RETURN HOME

- Contact other family members and close friends.
- Have a relative, friend, or neighbor answer the telephone or help make telephone calls.
- Contact your clergy person (if you have one), who can assist you with funeral arrangements.
- Discuss your choice of funeral arrangements.
- Determine any special music or readings you would like at the services.
- Ask someone to keep a list of all phone calls, flowers, and food donations.
- Determine if you would like donations made to an organization or charity in memory of your family member.
- Contact an attorney (if you have one) who will be able to assist with any legal matters.
- Notify employers of your family member's death.
- Notify your children's school.

BEFORE GOING TO THE FUNERAL HOME

You may wish to take the following information about your family member:

- Full name, nickname, or other names the person might have used.
- Date and place of birth.
- Social Security number.
- Occupation.
- Father's name and mother's maiden name.
- If a veteran, proof of military service.
- List of relatives and relationships.
- List of memberships in clubs & organizations, places of worship, schools attended, and awards received.
- The name and address of an organization or charity to whom you wish to have memorial donations made.
- A list of individuals who might be pallbearers and/or able to speak about your family member at the service.
- You may also wish to bring the clothing in which your family member will be buried.
- The arrangements for food or a reception after the memorial or burial service.

AFTER YOU HAVE MADE FUNERAL ARRANGEMENTS

1. Obtain at least 3 copies of the death certificate. These are usually available from the funeral director or your town/city hall.
2. Contact life insurance companies.
3. Contact your local Social Security office to determine if you are eligible for benefits.
4. Contact your bank concerning any existing accounts.
5. Notify creditors and credit card companies.

You and your family will continue to be in our thoughts and our staff is available to assist you during this difficult time.

Adapted with permission from the Yale-New Haven Bereavement Support Team & Hartford Hospital Aftercare Program



*The Butterfly:
A symbol of hope
and new life*

SYMBOL OF HOPE

A Symbol of Hope
A butterfly lights beside us like a sunbeam
And for a brief moment its glory and
beauty belong to our world
But then it flies again
And though we wish it could have
stayed...
We feel lucky to have seen it.

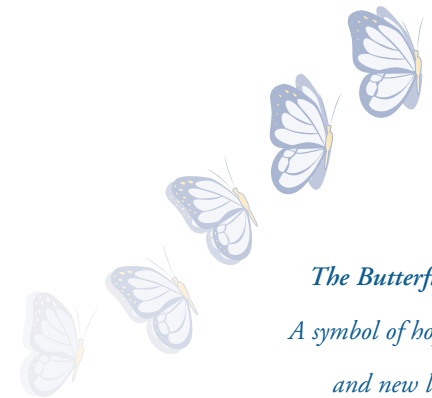
-Author Unknown



1 . 8 0 0 . 8 7 4 . 5 2 1 5
(24 hour number)

After You Leave

some suggestions
to help you
through the
next few days



*The Butterfly:
A symbol of hope
and new life*

